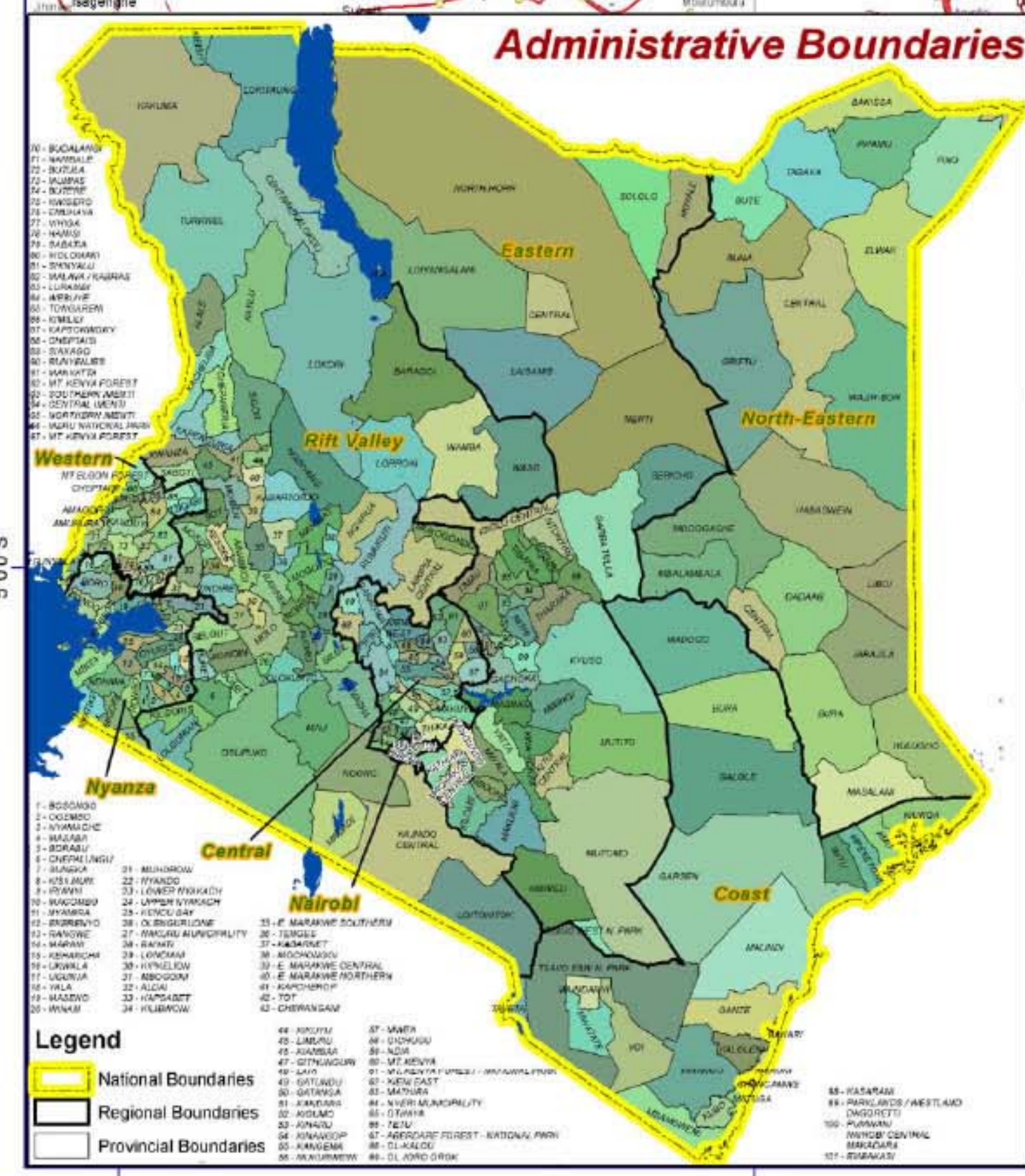
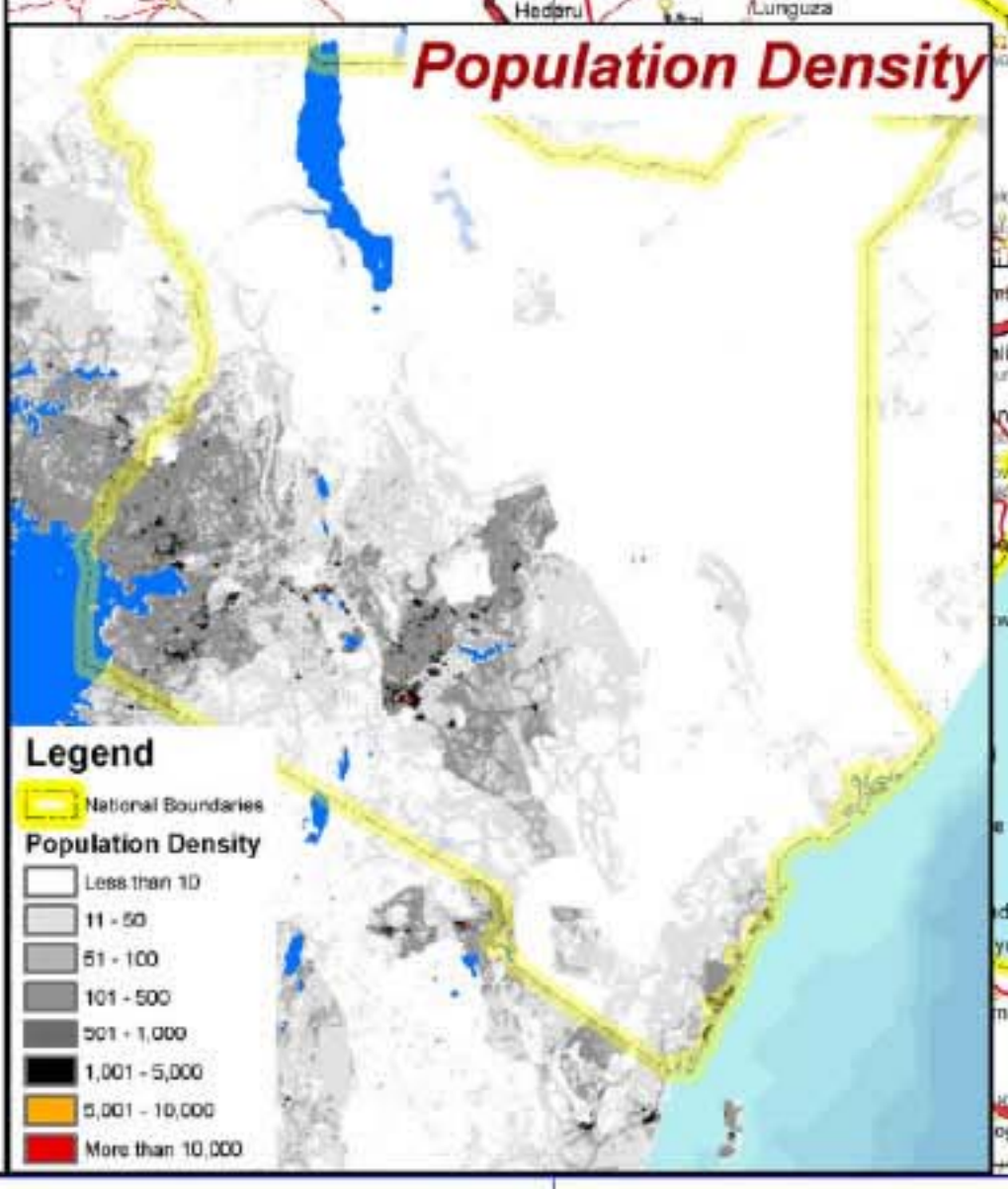


**Silverstone Transport**

**Administrative Boundaries**



**Population Density**



- Legend**
- National Boundaries
  - Regional Boundaries
  - National Capital
  - Large City
  - City
  - Town
  - Village
  - Small Village
  - Railway
  - Civilian Airport
  - Civilian / Military
  - Military Airport
  - Other Airport
  - Ports
  - Civil Works
  - Bridges
  - Ferries
  - Primary Roads
  - Secondary Roads
  - Tertiary Roads
  - Trails / Tracks
  - Drainage
  - Perennial
  - Non-perennial
  - Digital Elevation Model (m)
  - 169 - 0
  - 1 - 500
  - 501 - 1,000
  - 1,001 - 1,500
  - 1,501 - 2,000
  - 2,001 - 2,500
  - 2,501 - 3,000
  - 3,001 - 4,000
  - 4,001 - 5,000
  - more than 5,000
  - Country Office
  - Sub-office
  - Warehouse

Names and boundaries on this map do not imply acceptance or recognition by the World Food Programme or by the United Nations. Facts and figures in this map are accurate and up to date to the best of our knowledge at the time of printing but subject to change at any time. The World Food Programme makes no warranty or representation as to the reliability or accuracy of the data contained herein. This map is for planning purposes only. © United Nations World Food Programme 2006. All rights reserved. Compiled by WFP ODAP (Situation Room), Gind. Lat.Img. Spheroid WGS 1984. Date: 6 February 2006. Data Sources: ACC (roads), FAO (administrative boundaries), Global Discovery, USGS (population density, digital elevation model). For info please contact Emergency.Preparedness@wfp.org