

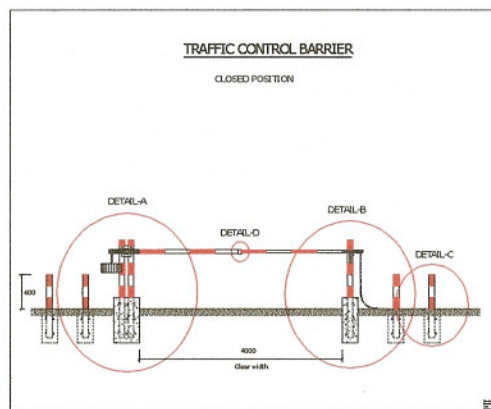


**Ministry of Transport and Roads
Government of Southern Sudan
TO ALL ROAD USERS.**

Road Protection Barriers implementation.

The GoSS MOTR in conjunction with State authorities intends to place barriers on the roads to prevent traffic using the road when the road is wet to prevent the damage that can cause road sections to fail.

THE BARRIERS WILL BE CLOSED WHEN THE ROAD IS WET.



The Barriers will be operated by State Authorities and the following will be the guidelines for their use:

- Close the barrier when it rains.
- Only open the barrier when sufficient time has passed to let water drain off the road surface – generally 6 hours to 1 day dependant on the rain fall experienced

ALL ROAD USERS are requested to adhere to the instructions given at the barriers and when closed, to be patient, **STOP and WAIT**. The use of the barriers is intended to protect the roads on which Southern Sudan relies for its Economic and Social Benefits.

Yours Sincerely,

**H.E. Madam Minister Rebecca Nyandeng De Mabior.
Minister of Transport and Roads,
Government of Southern Sudan-JUBA.**