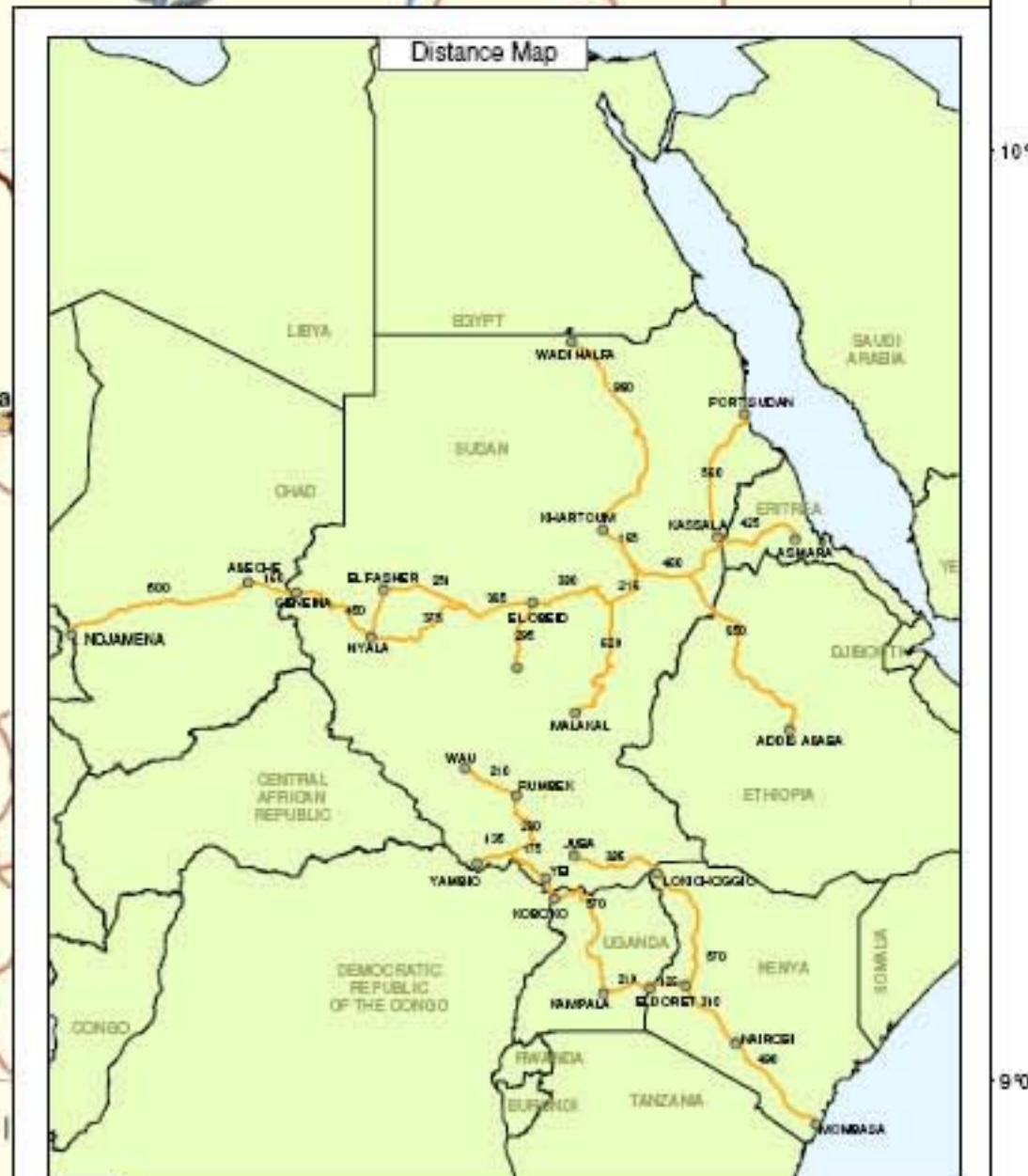
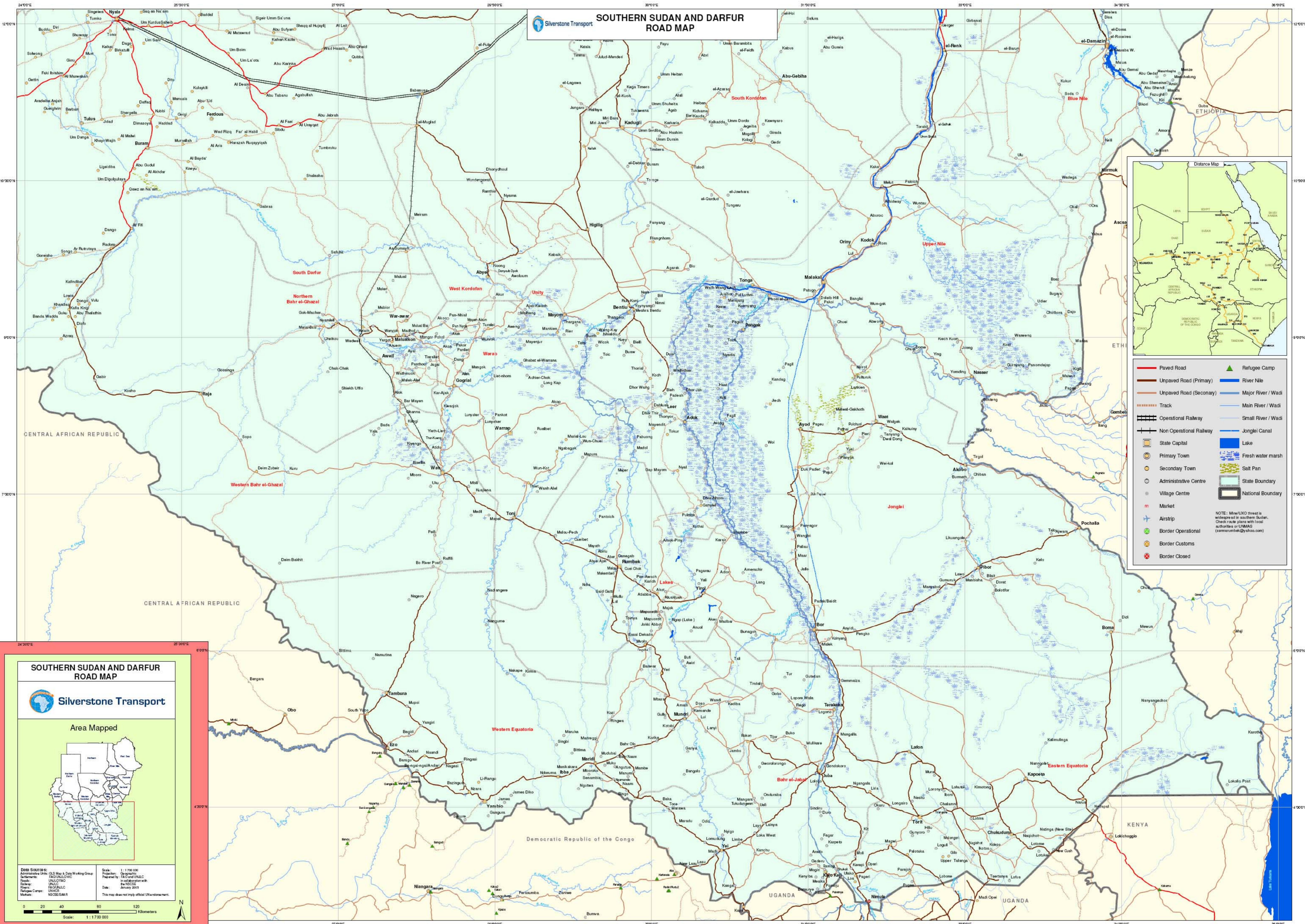


Silverstone Transport **SOUTHERN SUDAN AND DARFUR ROAD MAP**



	Paved Road		Refugee Camp
	Unpaved Road (Primary)		River Nile
	Unpaved Road (Secondary)		Major River / Wadi
	Track		Main River / Wadi
	Operational Railway		Small River / Wadi
	Non Operational Railway		Jonglei Canal
	State Capital		Lake
	Primary Town		Fresh water marsh
	Secondary Town		Salt Pan
	Administrative Centre		State Boundary
	Village Centre		National Boundary
	Market		
	Airstrip		
	Border Operational		
	Border Customs		
	Border Closed		

NOTE: Minor UN/ICJ threat to wilderness in southern Sudan. Check route plans with local authorities or UNMAS (sismarumabak@yahoo.com)

SOUTHERN SUDAN AND DARFUR ROAD MAP

Silverstone Transport

Area Mapped

Data Sources: Administrative Units: OLS Map & Data Working Group
 Settlements: FAO/UNEP/UNLCC
 Roads: UNLCC/FAO
 Rivers: UNLCC/FAO
 Refugees Camps: UNHCR
 Markets: UNLCC/FAO

Scale: 1:1,700,000
 Projection: Geographic
 Prepared by: FAO and UNLCC
 Date: January 2005
 This map does not imply official UN endorsement.

Scale: 1:1,700,000